

Riptide®

HEA170S

2000 x 1640 x 820 mm | 895 L | 232 kg
3 persons, 1 seat, 2 loungers

Infinity 170



26 Ultra-thin Massage Jets

2.5" Jets, direct

3" Single-Spin Jets, rotating

4" Single-Spin Jets, rotating

5" Single-Spin Jets, rotating



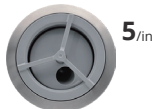
2.5"/in



3"/in



4"/in



5"/in

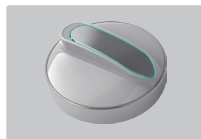
Highlights

- Ingenious jet design for maximum comfort
- More comfortable and smooth seating experience
- User-friendly touchscreen panel
- First class water treatment system
- Top insulation solution in the market

Pump System

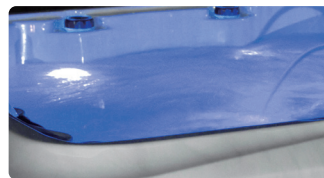
1 x 3HP Massage pump

1 x 0.5HP High flow circulation pump



- High-efficient mixed ozone sterilization
- Spatech CA300-3KW heater
- Spatech TP10 touchscreen panel
- Dream time lighting
- 2.5" Lifting fountain
- Blister base

Dream Time Lighting



- Large LED light
- Waterlevel light
- Backlit light controls

Platinum Lock Insulation



- Full foaming
- Energy efficient
- Higher than CEC standard

Perfect Massage Experience



- Ultra-thin massage jets design
- No raised edges on jets
- Ergonomic seating

Water Treatment System



- NSF food-grade hoses
- Easy care CD ozone with boost chamber
- 2 x highly efficient blue filters



Aluminum Cabinet

Aluminum cabinet ensures outdoor durability, maintaining its shape even under extreme heat exposure.



Control System

Spatech CA300-3KW + TP10 Touchscreen Panel

- Intuitive touchscreen panel
- Customize maintenance reminder
- Rapid troubleshooting feedback
- 4 x Preset modes to maximize efficiency and reduce running costs



Shell Color



Cabinet Color



Luxury Thermal Cover



Warranty

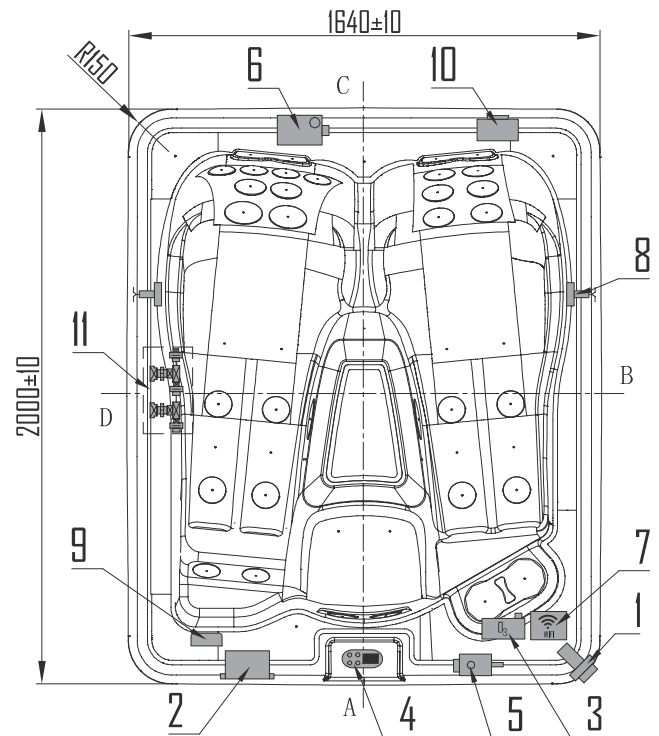
- 7 Year Structural Warranty
- 5 Year Acrylic Warranty
- 4 Year Jet Warranty
- 2.5 Year Pump and Electrical Equipment
- 2.5 Year Plumbing Warranty
- 2.5 Year Cabinet Warranty



* Within the scope permitted by law, the above warranty policy may be updated from time to time. Please consult authorized dealers for specific details.

Technical Requirements

Power Supply
15 Amp
<p>Electricity: All spas must be wired following all national electric codes. Always use a qualified electrician to perform the electrical installation. Refer to the product electrical layout for specific power connection points.</p> <p>Location: Select a site that is stable and capable of supporting the weight of your spa, its water, and the people using it. The surface needs to be flat and level as it must provide continuous support for the entire bottom of the spa structure.</p> <p>Important Notes: For more information, please see the general installation guide or contact your dealer.</p>



11		Heat pump ready unit(Optional)	1	Pcs
10		Subwoofer(Optional)	1	Pcs
9		C.stream(Optional)	1	Pcs
8		Transducer Speaker(Optional)	2	Pcs
7		WIFI	1	Pcs
6		Single Speed Pump	1	Pcs
5		Circulation Pump	1	Pcs
4		Control Panel	1	Pcs
3		CD Ozone Generator	1	Pcs
2		Control Box	1	Pcs
1		External Drain	1	Pcs
NO	Icon	Description	Qty	Unit